



**SPARTAN  
CONTROLS**

Experience Industrial Innovation



# Compressor Control Solutions

---

Optimizing your operations with our industry  
expertise and technologies



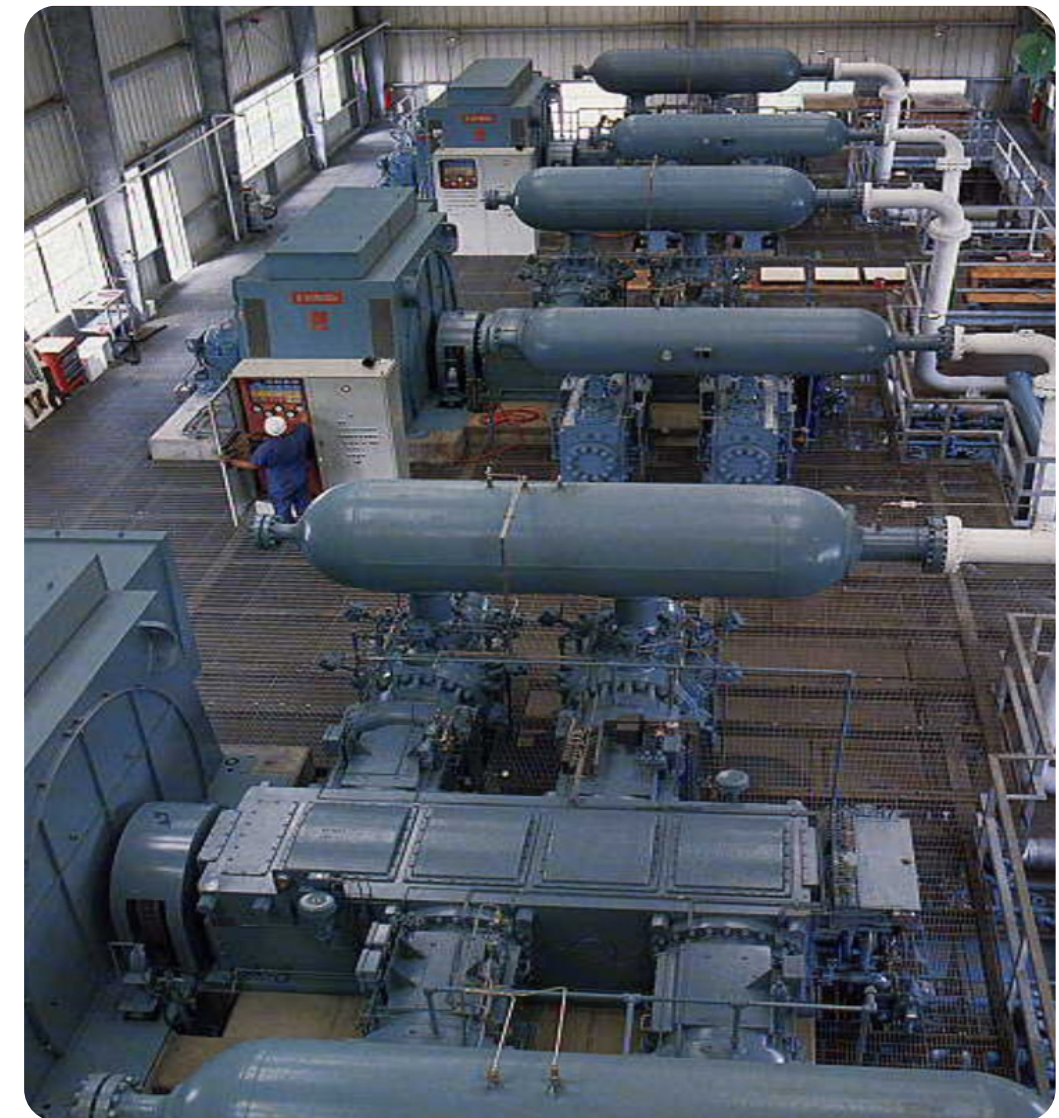


## Engine & Compressor Solutions

- Advanced engine and compressor control panels, control design, and control code since 1967
- Experienced sales, project, technical, and service team
- Dedicated application and software development team – focused on new solutions to bring into the market
- Continuous investment, using feedback from customers and internal teams, to ensure class-leading design, features, and build quality
- Regarded by industry to be the leading engine and compressor control panel and software supplier worldwide
- A leader in the integration of engine, compressor, and motor controls

## Control Panels Programmable Solutions

- Superior operator interface
- Custom applications available
- Advanced process control
- I/O sizing to fit application.
- Multiple control platforms
- Extensive setup options via HMI
- Recip, rotary and screw applications
- Engine or motor drivers
- Engine communication interfacing
- Motor VFD communications interfacing







## Control Panels Unmatched Functionality & Flexibility

### Built in Functionality:

- Capacity control
- Suction valve control
- Blowdown and recycle valve control
- Louver control
- Ignition control
- Lube and dump valve control
- Full range of start/stop/control sequencing
- Custom loading logic
- Data logging
- Remote start/load
- Engine/motor communications interfacing
- Hot start systems

## Spartan Controls Retrofit Solutions

### Subplate Conversions

- Replace existing: Exacta, Murphy, Frick Quantum, Hawk-I, Prologic, Motiv, other PLC, and EMIT systems with updated Allen-Bradley, Altronic, or REMVue hardware
- Keeps existing instrumentation, wiring, and control cabinet, lowering overall project and installation costs and completion timeline
- Upgrade path to advanced solutions such as AFR, SlipStream, and diagnostics
- Standard sizes in stock for quick delivery

### Full Panel Retrofits

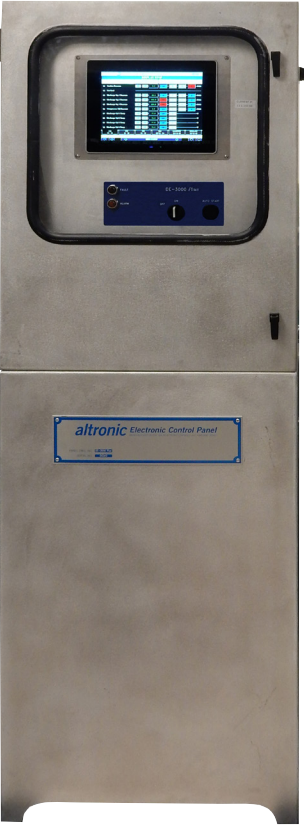
- Replace existing pneumatic, Amot Microguard, Flexiguard, and Murphy panels with complete Allen-Bradley, Altronic, or REMVue control panels
- Keep selected existing electronic instruments and wiring
- Upgrade path to advanced REMVue solutions such as AFR, SlipStream and Diagnostics
- Standard sizes in stock for quick delivery

## Spartan Controls Project Execution and Customer Support

- Program update support, program and document updates
- Updates thoroughly tested on simulators, not the customer's equipment
- Remote monitoring, remote FAT
- Program and CAD drawing historical archiving
- Vast installed base
- Standardized detailed project documentation – print and digital copy
  - Control narrative / operations manuals
  - I/O list / cause & effect
  - Communications map
  - Engineered stamped panel drawings, complete with heat and power calculations

# Compressor Control Available in Five Hardware Platforms/Configurations

**ALTRONIC**  
DE-3000



**ALTRONIC**  
DE-4000



**REMVUE**



**Allen-Bradley PLC**



**DELTA V**



- Configurable safety shutdown and control system
- Scalable IO capacity covering a wide range of applications
- C1D2 or C1D1 rated systems available
- Low power requirement
- Cost effective solution

- Modern configurable safety shutdown and control system
- Scalable I/O
- Configurable capacity control, sequencing timers, and autostart functionality

- RedLion PLC platform
- Pro-face HMI
- Shutdown and advanced process control
- Full suite of Spartan advanced applications available i.e. SlipStream, AFR

- Allen-Bradley, CompactLogix, ControlLogix, and MicroLogix PLC platform
- AB PanelView Plus or Pro-face HMI
- Shutdown and advanced process control
- Full suite of Spartan advanced applications available i.e. SlipStream, AFR etc.

- PK controller
- Native Plantwide integration
- Industrial PC HMI
- Shutdown and advanced process control
- Part of the One Plant™ architecture



## Cabinet Design

- Clean separation of pneumatic and electronic components
- Open access to instrumentation
- Option to mount instrumentation on panel or skid
- Cutouts for future pneumatic components
- Space for electrical entry
- Designed for expansion
- Segregation of I/O wiring



Optional instruments with bulkhead

## Custom Designs



- Indoor / Outdoor
- Heating and cooling options
- Nema 4, 4X
- Instrument racks

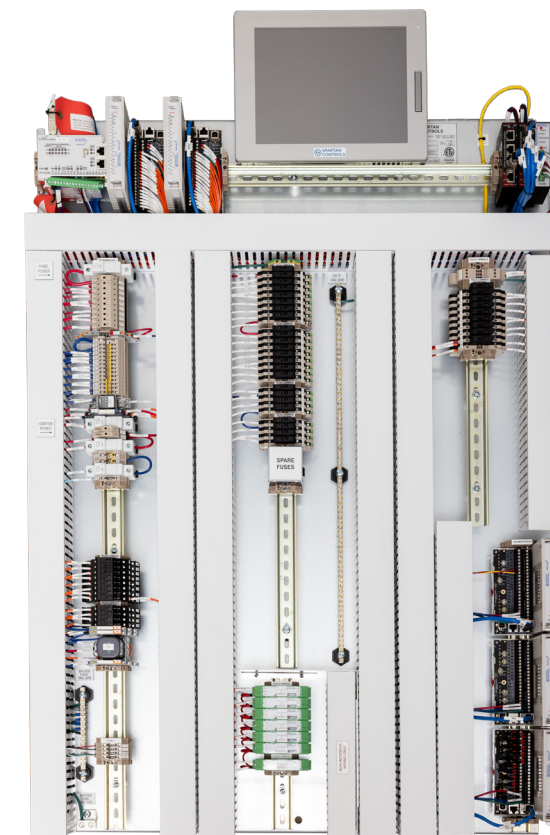
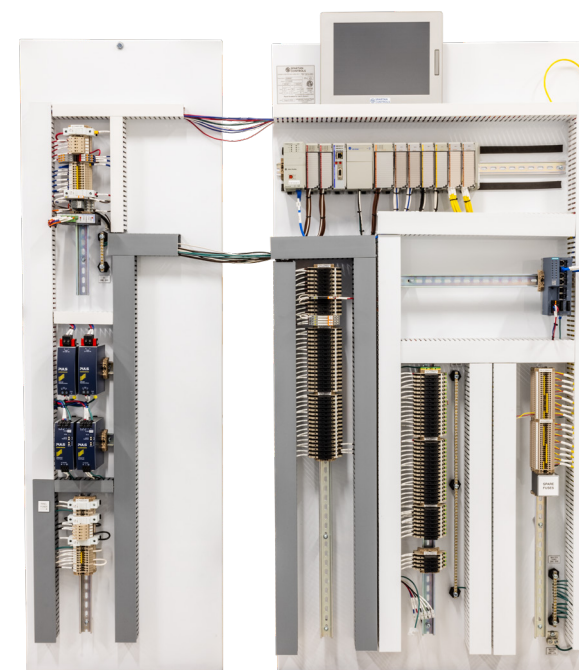
## Cabinet Design Examples



Nema 4X



Wall Mount

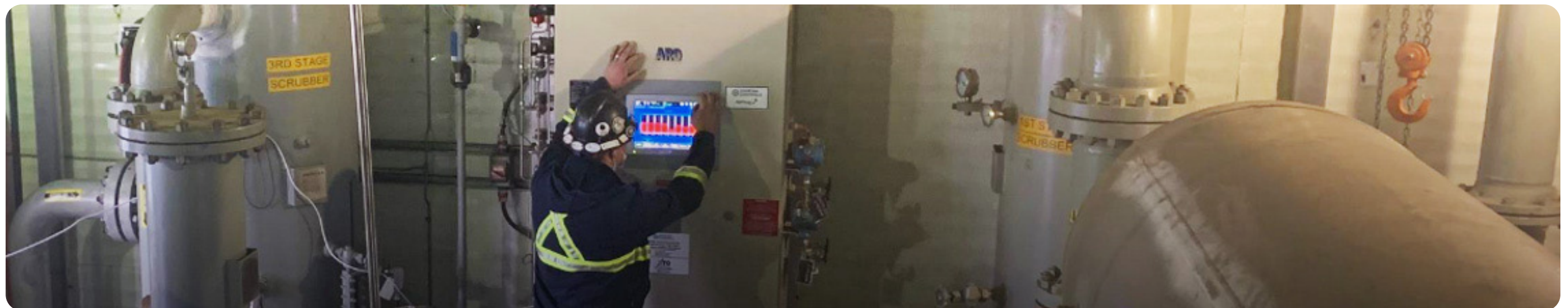


Subplate: installs into existing enclosure



## Spartan Controls Compressor Panel Service

- 24/7 support
- Over two dozen experienced and fully equipped field technicians
- Startup and commissioning of compressor panels for new and retrofit applications globally
- Troubleshooting and fine-tuning of compression assets
- In-House or on-site training
- Remote or in-house FAT





Experience Industrial Innovation



# Call us or request a quote online 24/7

+1 (877) 278-6404 | [info@spartancontrols.com](mailto:info@spartancontrols.com)

©2024 Spartan Controls. All rights reserved  
Compressor Control Solutions\_2024

[spartancontrols.com](http://spartancontrols.com)