

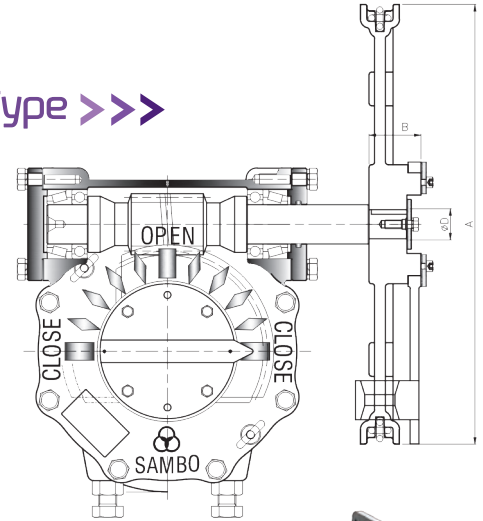
Chain Wheel Type

WORM Standard >>>

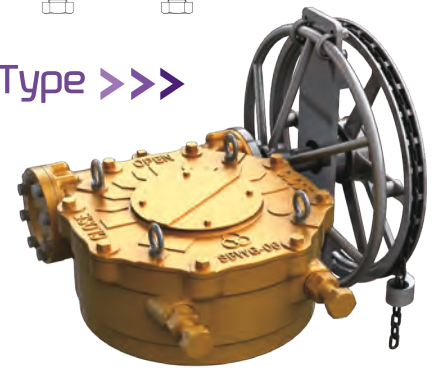
UNIT : mm

MODEL	SIZE	A	B	ØD & KEY
CH-200	200	200	43	Ø16 (6X6) Ø21 (6X6)
CH-250	250			
CH-300	300	300	43,5	Ø26 (8X7) Ø32 (10X8)
CH-350	350			
CH-400	400			
CH-450	450	500	50	Ø38 (12X8)
CH-500	500			
CH-550	550			
CH-600	600			
CH-700	700	700	51,5	Ø38 (12X8) Ø50 (16X10)
CH-800	800			

Gear Type >>>



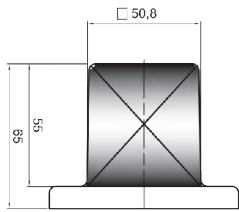
Hammer Type >>>



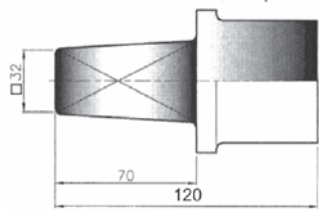
Chainwheel has 2 types

- First, hammer type which is joined with handwheel.
- Second, gear type which is adhered to gear directly.
- material : sprocket rim (FCD-450), guide arm (FCD-450), chain (steel+zn)

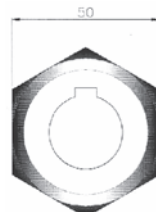
Square Adapter >>>



2" Square Nut Adapter



32 Square Nut Adapter

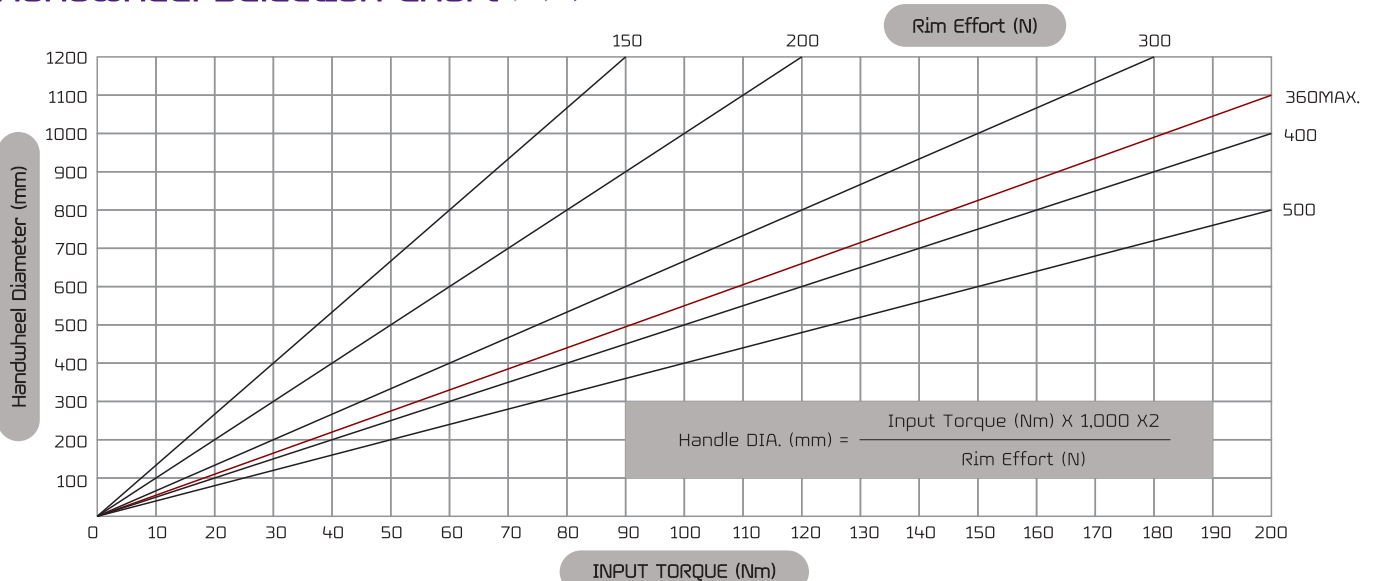


Hexagon Adapter



2" Square Nut

Handwheel Selection Chart >>>



Size and component specification in this catalogue are subject to change without prior notice for quality improvement.
* Mark has been changed and updated.